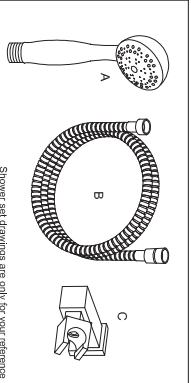
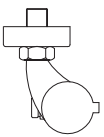


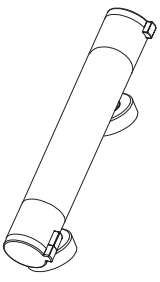
ESCALA 1:5
SCALE 1:5



Shower set drawings are only for your reference

EQUIPO DUCHA
SHOWER SET

A	TELEFONO HANDSHOWER	Cromado ABS ACS
B	FLEJO HOSE	ACERO INOXIDABLE STAINLESS STEEL 1,75m ACS 1/2"-1/2"
C	SOPORTE HOLDER	Cromado ABS



Nr.	DESCRIPCION	CANT. QTY.	MATERIAL Y TRATAMIENTO MATERIAL & TREATMENT
1	MANEJA TERMOSTÁTICA THERMOSTATIC HANDLE	1	ABS Cromado Chromed ABS
2	MANEJA TERMOSTÁTICO THERMOSTATIC CARTRIDGE	1	Bulbo de Acero Var Bulb
3	TORNILLO FIJACIÓN CARTUCHO CARTRIDGE FIXATION SCREW	1	ACERO INOXIDABLE M6x7 STAINLESS STEEL
4	JUNTA TORICA O-RING	1	NBR
5	RACTOR CONNECTOR	1	LATÓN cromado Chromed BRASS
6	CUERPO FUNCIONCIÓN CASTING BODY	1	LATÓN Cromado Chromed BRASS
7	MONTAJA HEADWORK	1	Discos cerámicos giro 80° Ceramic disk 80° turn
8	MANEJA ON-OFF ON-OFF HANDLE	1	ABS Cromado Chromed
9	JUNTA TORICA O-RING	2	NBR Ø14, 2x2,4
10	TUBERCA TORCA SLIDING NUT	2	LATÓN cromado Chromed BRASS
11	RACTOR CONNECTOR	2	LATÓN BRASS
12	VÁLVULA ANTIRETORNO CHECK VALVE	2	POM Ø15x16-DN10
13	FLORON FLANGE	2	ACERO INOXIDABLE 18/8 Cromado STAINLESS STEEL 18/8 Chromed
14	JUNTA PLANA CON FILTRO FLAT JOINT WITH FILTER	2	NBR + ACERO INOXIDABLE 24x15x3
15	EXCÉNTRICA ECCENTRIC NUT	2	LATÓN cromado con reductor sando Chromed BRASS with noselless CW617

clever

MODELO MODEL	TERMOSTÁTICO DUCHA THERMOSTATIC SHOWER
SERIE RANGE	NINE
EDICIÓN EDITION	1

FECHA
DATE 11.03.2014

This drawing and design is the property of CLEVER and must not be copied or communicated to a third party without written permission.